



# ETT Booklet Smart City



Universities  
Research Centers  
Innovation Centers  
European Projects

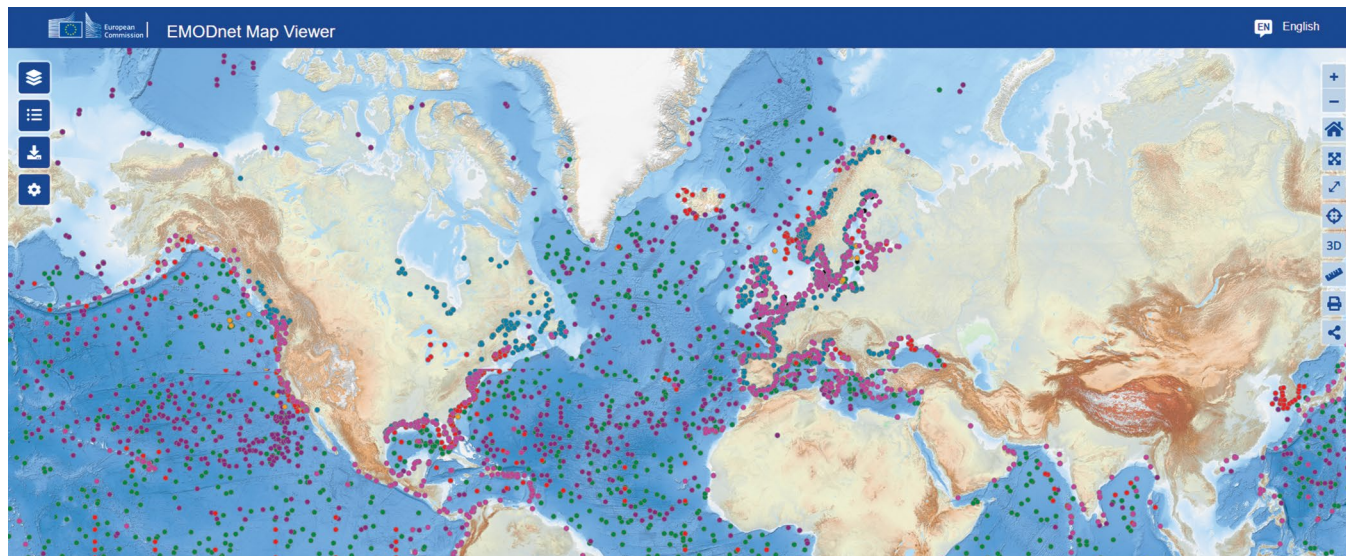
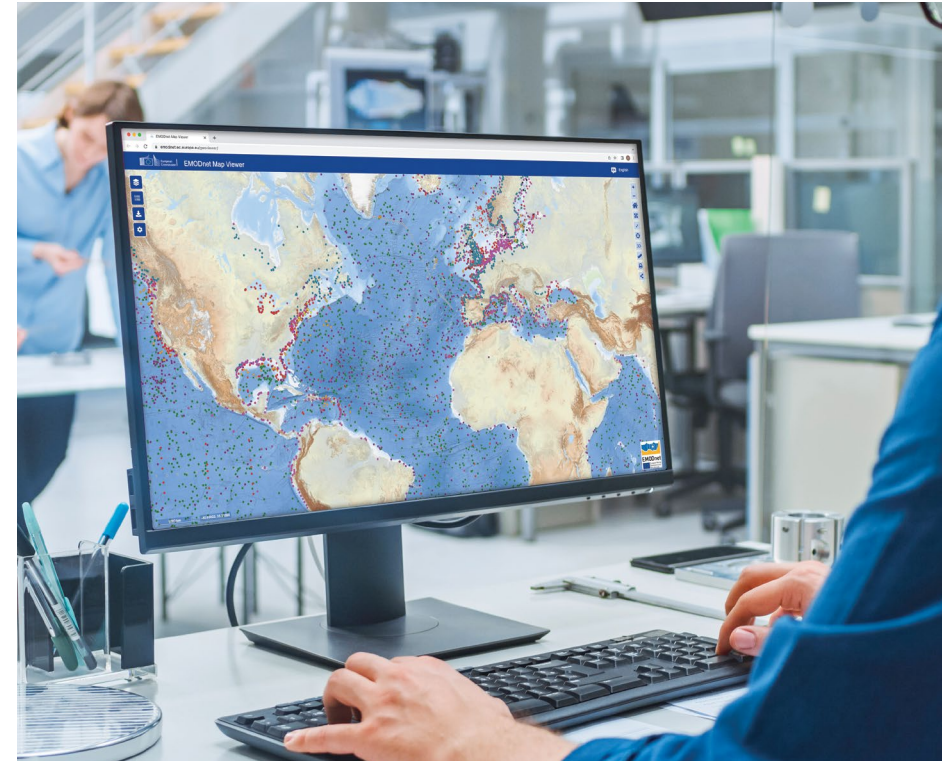
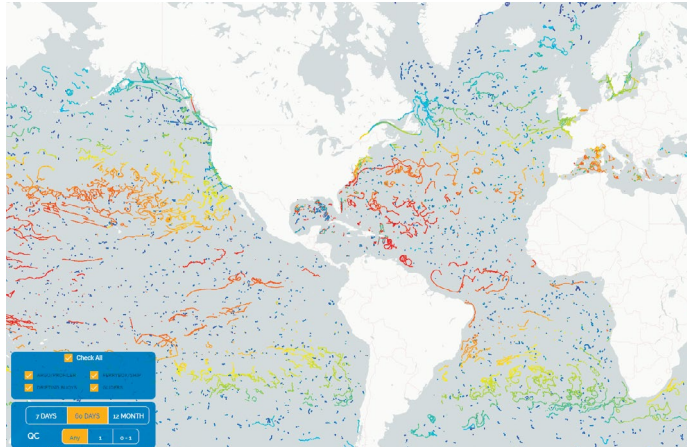
# Emodnet Physics European Commission DG MARE

## OUR SERVICES

Big Data Collection  
Big Data Analysis  
Software Development

## PARTNERS

MARIS BV  
IFREMER  
SMHI  
ICES  
NOC-BODC



## The physics of the ocean at your fingertips

EMODnet Physics is one of the seven thematic projects in the European Marine Observation and Data Network programme. EMODnet Physics works to provide a single point of access for in-situ data and data products of ocean physics. It implements common standards and FAIRness to federate more than 120 marine institutes in Europe and beyond. It offers more than 6000 measurement platforms in real time and hundred thousands of datasets. ETT is coordinating the thematic activities for more than 10 years.



## OUR SERVICES

Big Data Collection  
Big Data Analysis  
Software Development

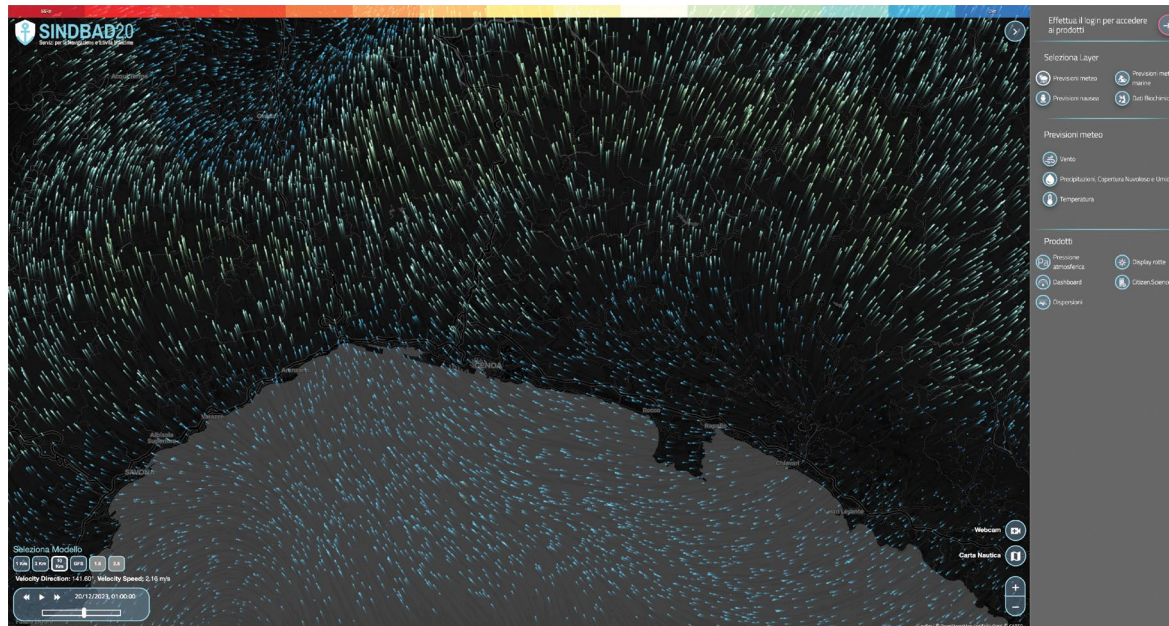
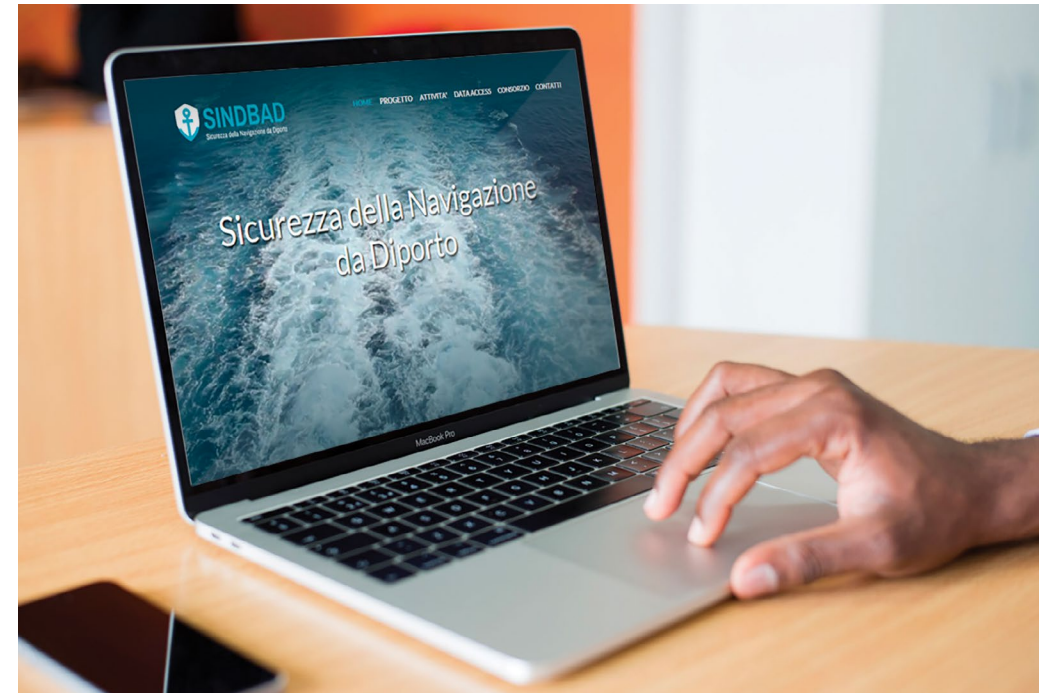
## PARTNERS

ON AIR s.r.l.  
Xedum s.r.l.  
PM TEN s.r.l.

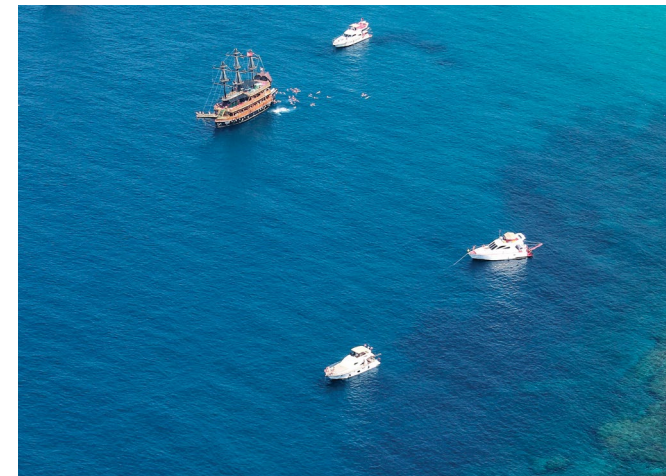
# Sindbad Sailing Safety and Services

SINDBAD is an advanced operational service for leisure sailing, tourism and maritime operations. It offers metocean forecasting data with very high resolution on the Ligurian Sea. It integrates innovative themes such as nausea indices maps, multi model comparison tools, custom dashboards and tools to interact with citizen science data.

[www.sindbad-liguria.it](http://www.sindbad-liguria.it)



## Comfort and safety for sailing in the Ligurian Sea





# STEP Smart Training and Education Platform

## OUR SERVICES

### Training

## PARTNERS

BC SERVICE s.r.l.  
AITEK s.p.a.



## Platform for the creation and use of educational content

STEP is an innovative platform to provide high level training courses. It integrates a market place from which the user can select the courses and implements interactive learning tools including Virtual Reality and Augmented Reality interactive scenarios. These comprehensive training programs encompass theoretical knowledge and hand-on practical experience, facilitated through immersive simulations of realistic scenarios.

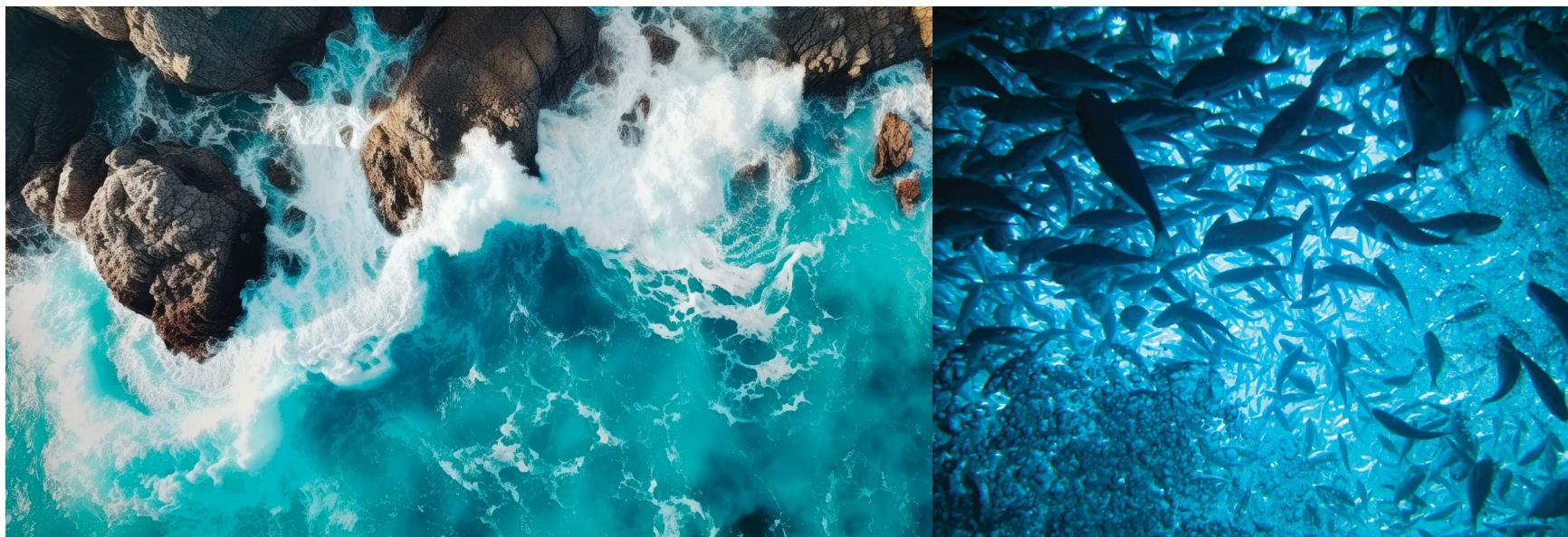
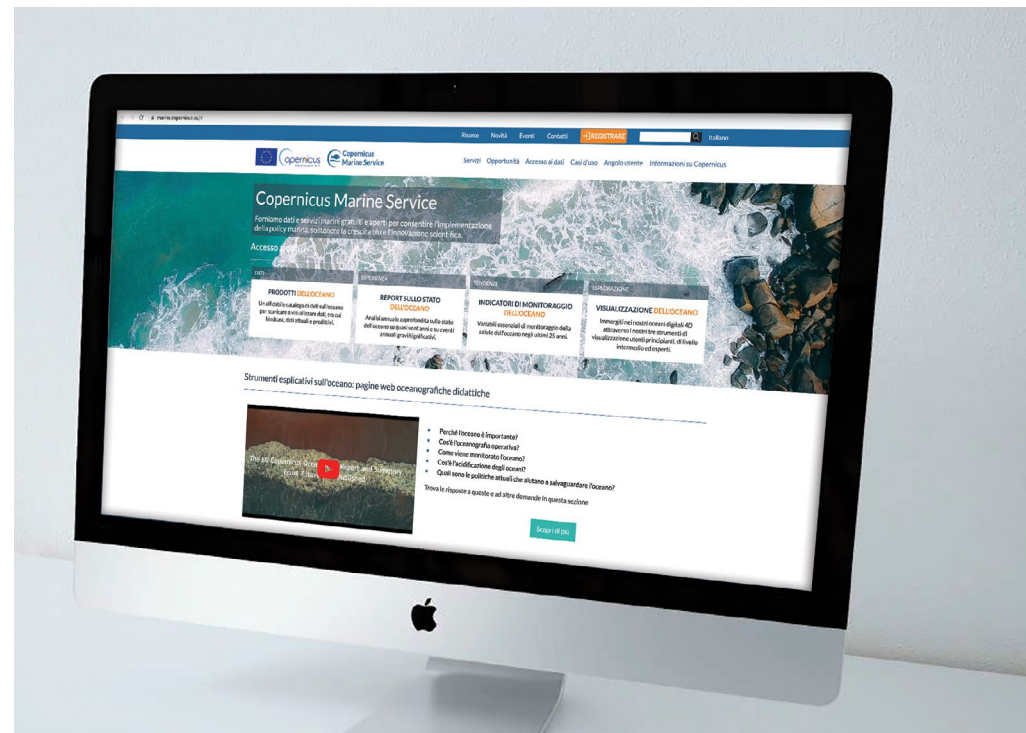


## PARTNERS

CNR – ISMAR  
ETT  
IFREMER  
ACRI  
SERCO  
LASERROMAE  
T-SYSTEM  
INNUERE CONSULTING  
ADWÄISEO

# Copernicus Marine Service Marine Data Store Dissemination Unit

The dissemination unit is the central hub of the Copernicus Marine Service. This cloud infrastructure, allows managing a catalogue of more than 900 operational forecasts products, satellite observations, ocean indicators and services to support marine stakeholders. In addition, the infrastructure integrates tools and services to monitor and improve service delivery performances.



**Reliability  
and security  
in a cloud  
catalogue**



## OUR SERVICES

Big Data Collection  
Big Data Analysis  
Software Development  
App Development

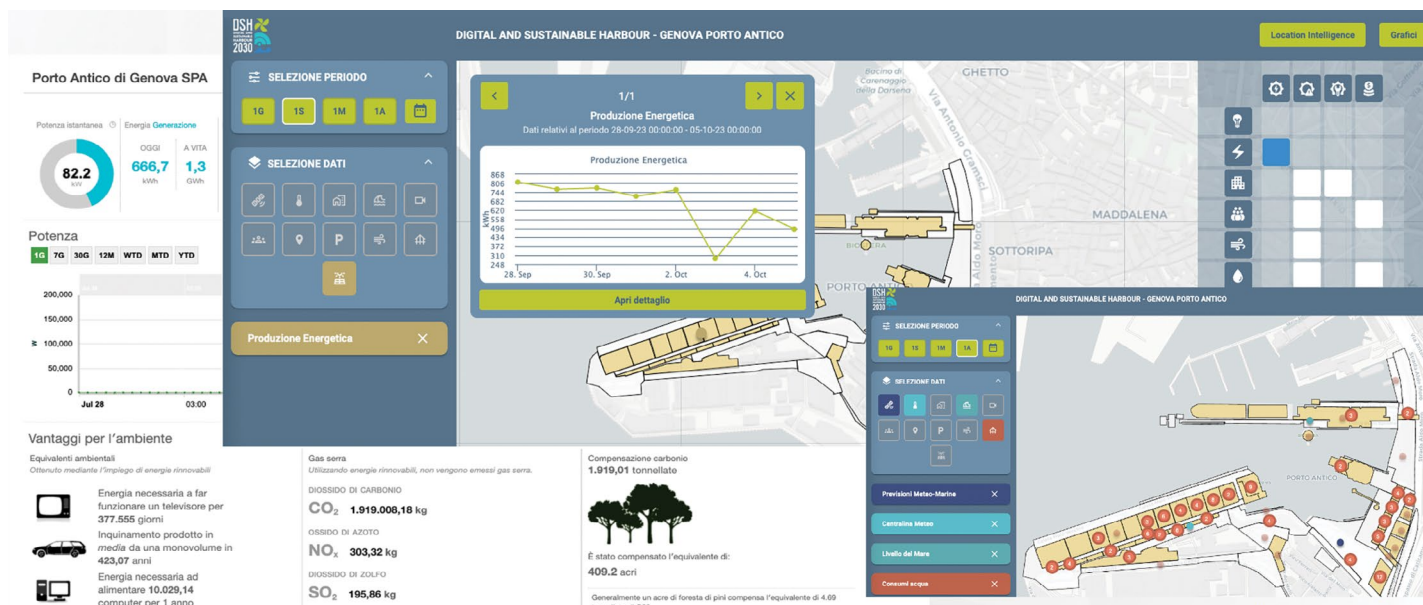
## PARTNERS

Porto Antico di Genova  
ETT  
Aitrust  
Bf Partners  
Circle Garage  
Colouree  
Netalia  
University of Genoa

# DSH2030

## Digital and Sustainable Harbour

The DSH2030 project is aimed at a sustainable monitoring, management and development of port areas. The pilot case, currently ongoing in the Porto Antico (Old Port) of Genoa, is already seeing significant experimentation with IoT technologies connected to control systems for water and energy consumption and the application of sensors and smart meters. The purpose is the creation of an enhanced digital twin that can be leveraged as a model to be reproduced at various levels and developed to include various areas of the city that are of touristic value.



Technology at the service  
of the development of port  
areas

## OUR SERVICES

Big Data Collection  
Big Data Analysis  
Software Development

## TECHNOLOGIES

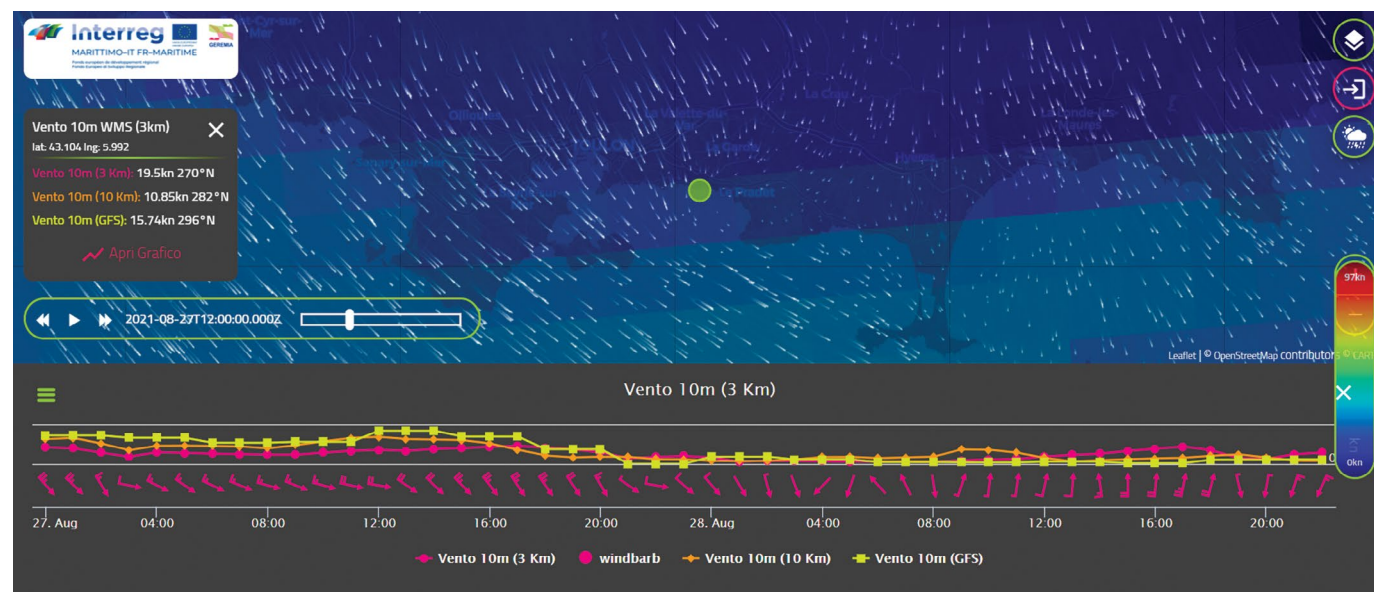
Virtual Reality

# Geremia

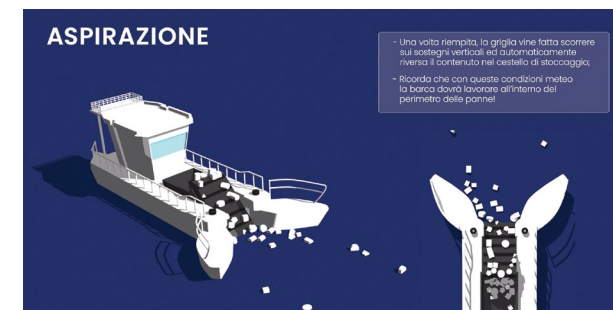
## ETT Research & Development

The GEREMIA project - Gestione dei REflui per il Miglioramento delle Acque Portuali - uses practical and innovative tools and solutions to train and support port water managers in the cross-border area between Italy and France.

Leveraging a Decision Support System (DSS) developed by ETT, data and resources are exploited to help prevent and contain pollution, improve port water quality and develop innovative systems for water quality assessment in the four ports of Toulon, Genoa, La Spezia and Olbia.



GEREMIA leverages a Decision Support System (DSS) created from port requirements, as well as from monitoring and simulation models.





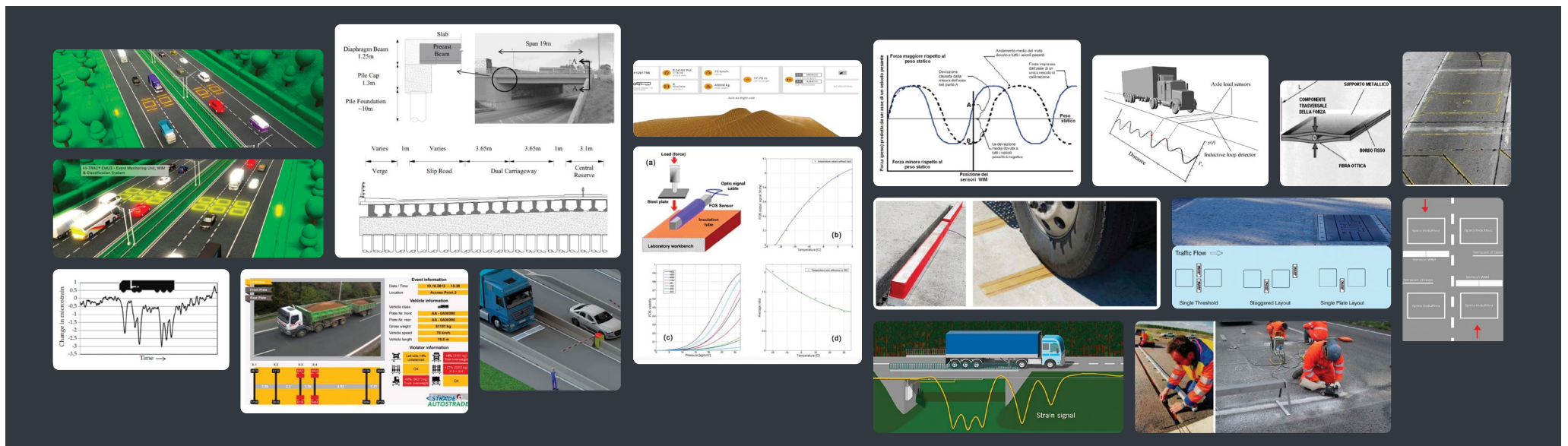
Software Development  
Big Data  
Data Analysis

# Sentinel Smart Road

## PARTNERS

ANAS  
ENEA  
TRAIN Consortium  
TAKIUS s.r.l.

The aim of Sentinel – Traffic safety and flow model – is to develop and create an intelligent integration system to weigh vehicles dynamically and once integrated with other systems, it collaborates in the intelligent and predictive management of heavy vehicle traffic.





OUR SERVICES

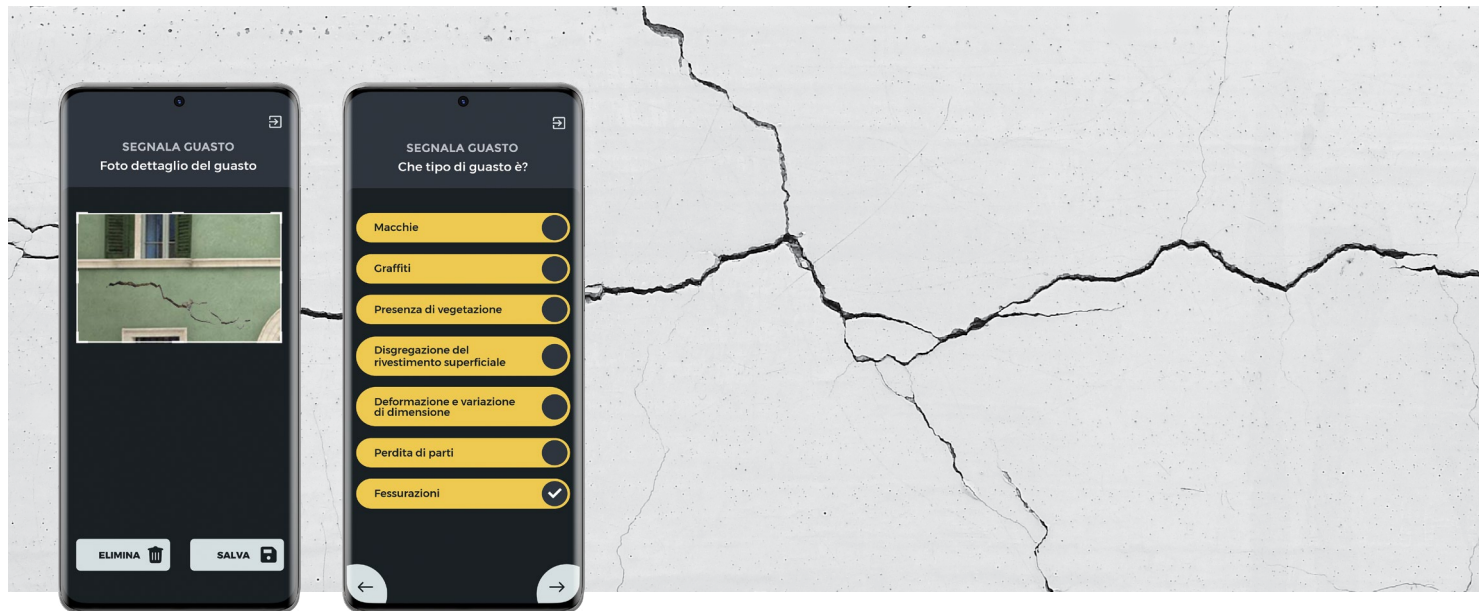
Software Development  
Digital Transformation  
Big Data  
Data Analysis

PARTNERS

STRESS Consortium  
University of Naples F. II

# MUST Maintenance Urban Sharing Tool

MUST is a digital platform to facilitate the asset maintenance workflow. With a snap of the failure the operator opens the maintenance ticket and triggers the maintenance processes. The supervisor reviews, prioritizes, validates and activates the ticket supervising the status up to its fix and closure.



## Maintenance Urban Sharing Tools





## OUR SERVICES

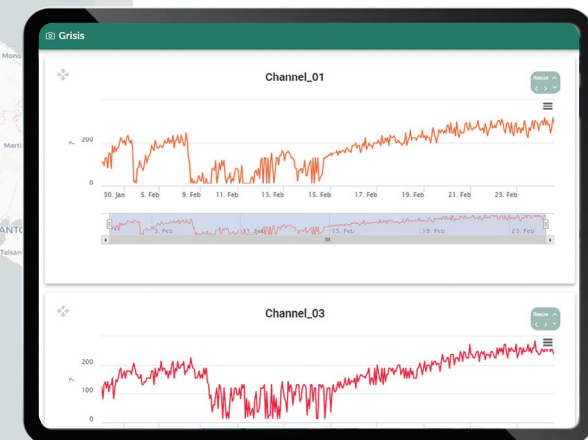
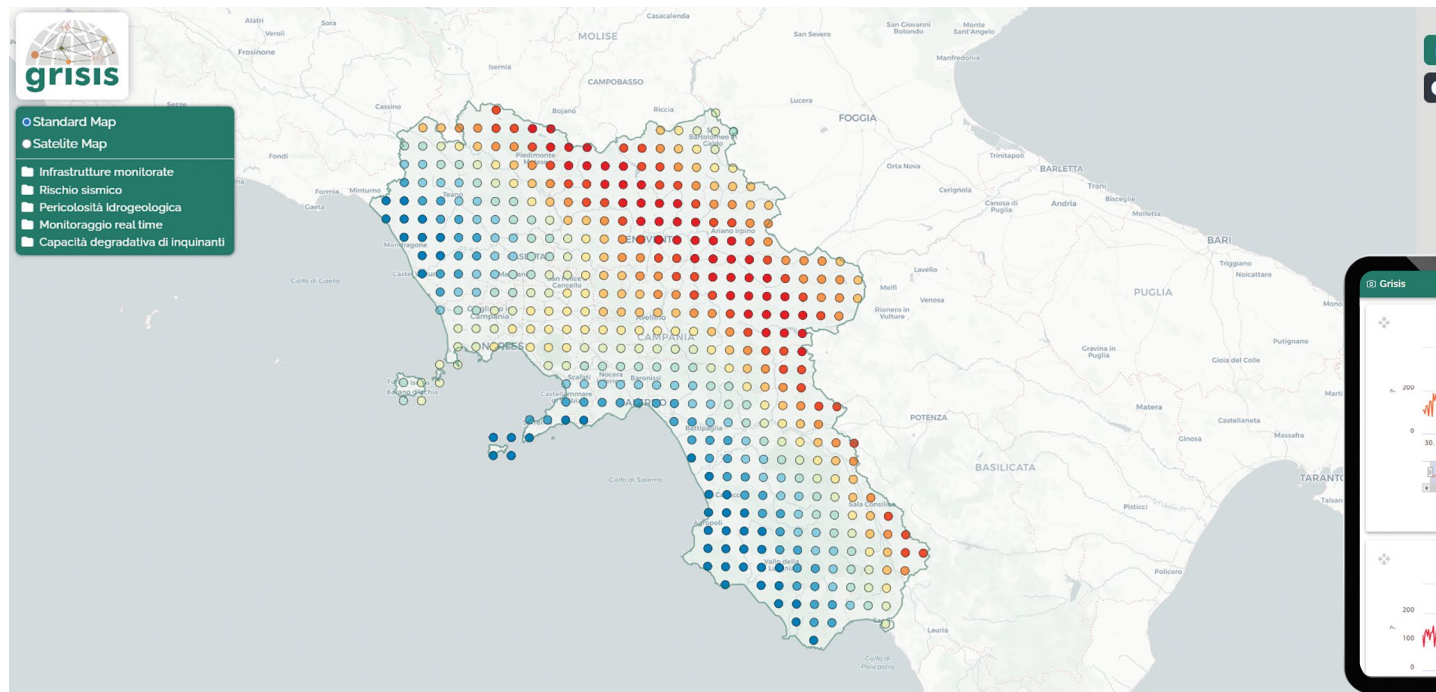
Software Development  
Big Data  
Data Analysis  
Risk Assessment

## PARTNERS

University of Naples F. II  
GENEGIS Italy SRL  
TECNOIN SPA.  
TECNOSISTEM SPA  
ITC-CNR  
TRE Consortium

# Grisis Risk and Safety Management For Infrastructures

GRISIS – Risk and Safety Management for Infrastructures – is a WebGIS based dashboard to support risk assessment and the management of sensitive infrastructures against natural and human based risks. It integrates seismic risk assessment tools and seismic damage analysis tools, hydrogeological assessment maps, landslides analysis and monitoring, IoT sensors based real time monitoring of the infrastructure, 3D rendering of the assets etc.



# MISENO Decision Support and Risk Management

## OUR SERVICES

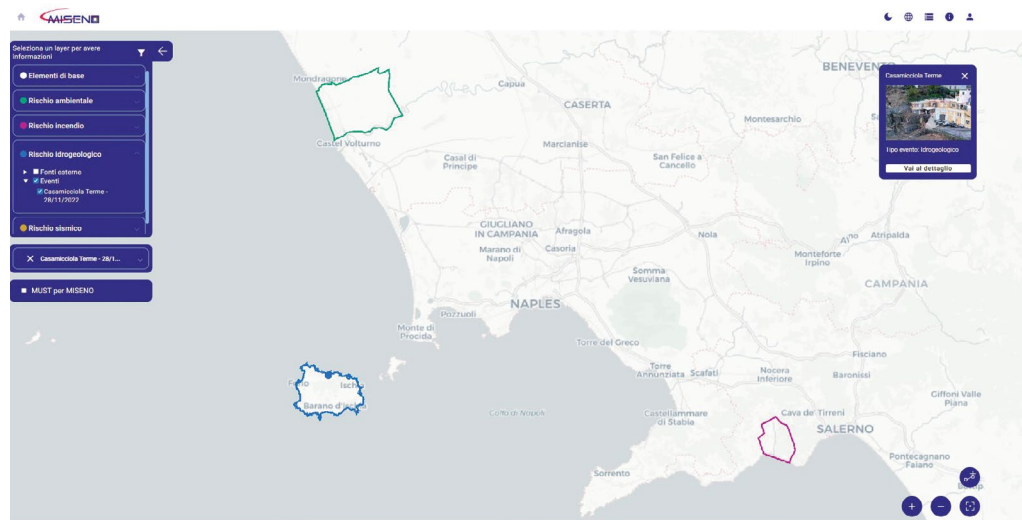
Big Data  
Data Analysis  
Risk Assessment

## PARTNERS

MAPSAT srl  
Soft S.r.l.  
ETT S.p.A.  
Tecno-In S.p.A.  
MEDINOK S.p.A.

The project aims at creating a sustainable and smart integrated application platform able to ensure an effective response to the management of emergencies on the territory, when adequate coverage for communications and exchange of information and data are not granted.

The decision support and management platform will also leverage a minivan equipped with instruments that can be installed at the time of the emergency on the territory for local command and control to return data to the platform. In this way, it will be possible to strengthen collaborations and interoperability between the different rescue communities during interventions.



**Multipurpose  
Ital-GovSatCom  
application  
Services for  
Emerging user  
Needs and  
Objectives**



OUR SERVICES

Big Data  
Data Analysis  
Risk Assessment

PARTNERS

Stress S.c.a r.l.  
University of Naples F. II  
University of Padua  
T.R.E. Consortium  
CETMA  
C.R.A.C.A.  
Veneto Nanotech  
Sipre

# PROVACI Heritage Management Tool



The project PROVACI – Technologies for Seismic Protection and Enhancement of Complexes of Cultural Interest, focuses on the seismic protection and the enhancement of historic buildings through the development of integrated techniques and methodologies for the protection, sustainable rehabilitation and enhancement of sites and structures of historical and artistic interest.

To assess the vulnerability, an initial effort has concentrated on defining systematic methodologies of knowledge through geometric, material and structural investigations, supported by a strong interaction with monitoring and in situ testing.



# Metropolis

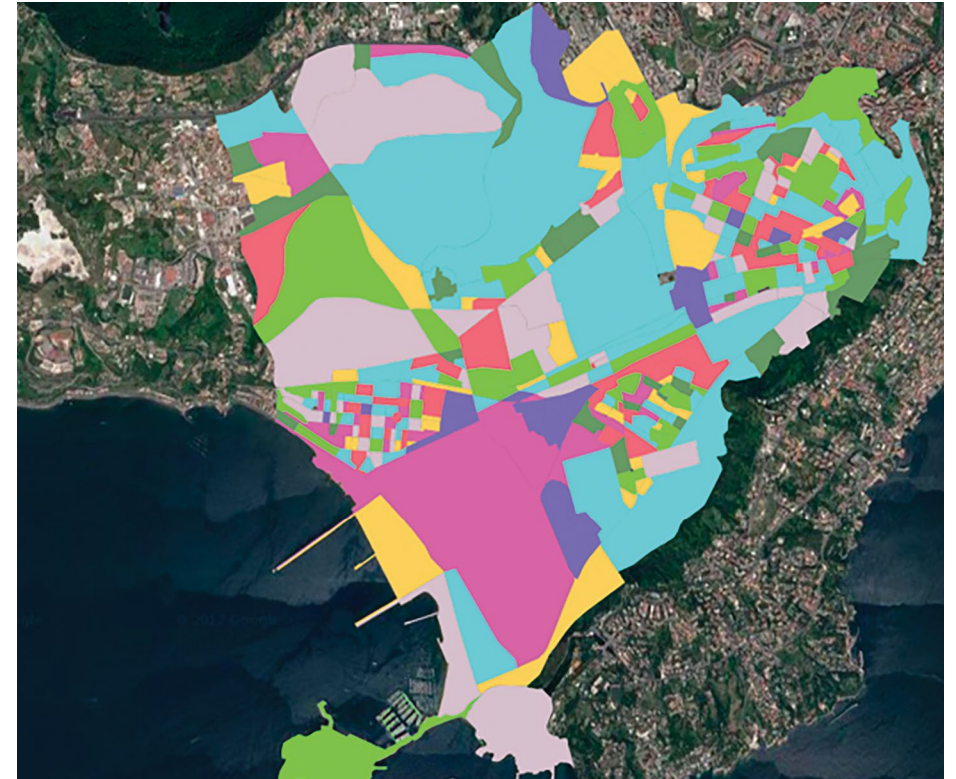
## Building Inspection Support

### OUR SERVICES

Big Data Collection  
Big Data Analysis  
Software Development

### TECHNOLOGIES

C#  
WPF  
WCF  
SQL 2012  
GeoServer  
ArcGis  
Leaflet



## Software to support building inspectors

Metropolis is a software to support inspectors that allows them to independently enter a series of information on the characteristics of buildings, both in the field and offline, connecting the information from different users in a modular but shared approach to information. Even external users are able to access this information, selecting and geo-locating it through the portal to obtain a knowledge base for the area that can be used for further processing and simulations.



## OUR SERVICES

App Design  
Graphic Design  
Augmented Reality  
Software Platform  
developing

## TECHNOLOGIES

Augmented Reality  
VR viewers  
Biometric systems  
AI for interactive  
chatbot tools  
Interaction with the app  
via voice commands

# LAnDING

## Innovative training

LAnDING is an innovative project aimed at creating educational models for vocational training. The software platform, which can be used through tablets and HoloLens viewers, allows for the implementation, management, delivery and monitoring of the training and learning process in workplaces. Through this system, an innovative methodology for the creation of content suitable for different workplaces and certification of learning is made available. In the course of machinery assembly activities, for example, the user can view the exploded technical drawing in 3D, with which he or she can interact, and watch the assembly video, in order to follow the correct procedures and complete the work.



**An Augmented Reality experience that supports innovative and context-aware work training and enables interaction via voice commands.**





ETT S.p.A.



## Genova

Via Enrico Albareto 21  
16153 Genova, IT  
T +39 010 6519116

## Milano

Viale Abruzzi 20  
20123 Milano, IT  
T +39 02 49532971

## Roma

Via Vincenzo Lamaro 51  
00173 Roma, IT  
T +39 06 37352352

## Torino

Corso Enrico Tazzoli 223  
10137 Torino, IT  
T +39 011 227 3611

## Palermo

Piazza Giuseppe Verdi 49  
90138 Palermo, IT  
+ 39 09 17658260

## Londra

Turners Reach House 8-10  
Chelsea Embankment  
London SW3 4LE, UK